

【产品介绍】

- 额定电流从6安到50安培;  
Rated currents from 6 to 50A
- 极高的差模和共模滤波特性;  
Very high differential and common-mode attenuation
- 用于强干扰滤波场合, 以及通过各类复杂的EMC测试。  
For various noisy applications requiring high filter performance, and emc test



Specification

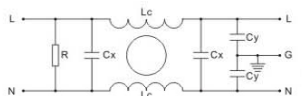
(规格表)

滤波器型号	端接方式	额定电流	额定电压	工作频率	耐压等级	绝缘电阻	工作温度	最大漏电流	尺寸图
PART No	Connection IN OUT	Rated current	Rated voltage	Line frequency	Hipot test voltage	Insulation Resistance	Temperature Range	Max leakage current	Pic
TY238S-6		6A	120/250VAC	50/60Hz	1450VDC/1Min 线-地(L-G): ≥100MΩ 2000 VAC/1Min	≥100MΩ @500VDC	25/085/21	0.5mA	FIG1
TY238S-10		10A						0.5mA	FIG1
TY238S-16		16A						0.5mA	FIG2
TY238M-20		20A						1.0mA	FIG3
TY238M-25		25A						2.0mA	FIG4
TY238M-30		30A						1.0mA	FIG4
TY238M-40		40A						1.0mA	FIG8
TY238M-50		50A						2.0mA	FIG8
TY440S-6FT		6A						0.5mA	FIG5
TY440S-10FT		10A						0.5mA	FIG5
TY440S-16FT		16A	1.0mA	FIG6					
TY440M-20FT		20A	1.0mA	FIG7					
TY440M-30FT		30A	1.0mA	FIG7					
TY761S-16		16A	1.0mA	FIG5					
TY761M-30		30A	2.0mA	FIG7					

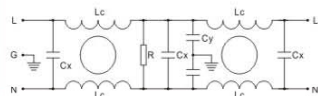
Schematic

电气原理图

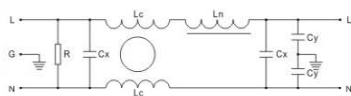
Ty238系列



Ty440系列



Ty761系列



Insertion Loss

Tested@50 ohm system as IEC/CISPR :17

滤波器型号	共模衰减 (Comm.Mode) -in Mhz						差模衰减 (Diff.Mode) -in Mhz					
	0.15	0.5	1.0	5.0	10	30	0.15	0.5	1.0	5.0	10	30
PART number	0.15	0.5	1.0	5.0	10	30	0.15	0.5	1.0	5.0	10	30
TY238S-6	41	72	78	60	63	72	40	49	47	45	48	60
TY238S-10	41	72	78	60	63	72	40	49	47	45	48	60
TY238S-16	45	77	78	60	68	80	36	47	51	55	57	52
TY238M-20	45	77	78	60	68	80	36	47	51	55	57	52
TY238M-25	50	77	78	60	65	70	45	70	71	74	67	60
TY238M-30	31	72	80	61	65	75	27	41	47	56	58	52
TY238M-40	26	55	60	60	45	40	28	40	55	55	45	40
TY238M-50	26	55	60	60	45	40	28	40	55	55	45	40
TY440S-6FT	50	83	92	74	71	44	75	90	81	75	79	63
TY440S-10FT	50	83	92	74	71	44	75	90	81	75	79	63
TY440S-16FT	66	90	83	63	64	73	73	92	84	74	70	64
TY440M-20FT	66	90	83	63	64	73	73	92	84	74	70	64
TY440M-30FT	47	67	80	80	80	64	36	72	66	55	55	56
TY761S-16	52	77	78	60	65	70	65	80	76	75	67	60
TY761M-30	52	77	78	60	65	70	65	80	76	75	67	60

Mechanical Specs

(安装尺寸图)

单位(Unit): mm

