

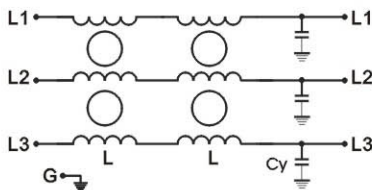
【TY890 系列产品介绍】

- Dv/Dt 抑制，过电压抑制，减少变频器电磁干扰；  
Excellent interference-suppression for Dv/Dt, reduce magnetic interference for inverter
- 电容量大，工作电流从 1A 到 1600 安培；  
Large working current, covering 1A up to 1600A
- 采用高品质元件，确保安全使用；  
High quality components ensure the safety of filters
- 减少变频器及马达线圈损耗，用于变频器输出滤波。  
Available for output filters for inverter, reduce the loss of Motor choke coil and inverter.



Schematic

电气原理图



变频器配套滤波器匹配表

规格	额定电流	变频器功率	泄露电流	尺寸图
TY890M-5	5A	0.75 / 1.5KW	≤5mA	Fig1
TY890M-8	8A	2.2 / 3.7KW	≤5mA	Fig1
TY890M-16	16A	5.5 / 7.5KW	≤5mA	Fig2
TY890M-30	30A	11 / 15KW	≤5mA	Fig2
TY890M-45	45A	18.5 / 22.5KW	≤5mA	Fig2
TY890M-75	75A	30 / 37KW	≤5mA	Fig3
TY890M-100	100A	45KW	≤5mA	Fig3
TY890M-120	120A	55KW	≤5mA	Fig3
TY890M-150	150A	75KW	≤5mA	Fig4
TY890M-200	200A	93KW	≤5mA	Fig4
TY890T-300	300A	110 / 132 / 160	≤5mA	Fig5
TY890T-400	400A	187 / 200 KW	≤5mA	Fig5
TY890T-500	500A	220 / 250 KW	≤5mA	Fig6
TY890T-630	630A	280 / 315 KW	≤5mA	Fig6
TY890T-800	800A	350 / 400 / 450	≤5mA	Fig7
TY890T-1200	1200A	500 / 560 / 630	≤5mA	Fig7

Electrical Specs

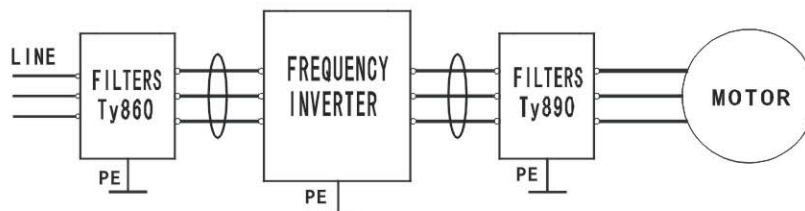
(电气参数表)

额定电压:	250/440/480VAC 50/60Hz
额定电流:	@40°C
耐电压测试:	
Line to Ground:	2700VDC, 1 min
Line to Line:	1450VDC, 1 min
气候类别:	HPF(25/085/21)
工作频率:	0~120Hz
开关频率:	Fmax=60KHz

备注：本系列滤波器有690VAC等级滤波器可选；

Connection

安装原理图





**Mechanical Specs**

(安装尺寸图)

单位(Unit): mm

Fig1

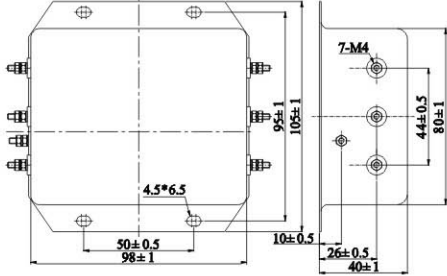


Fig2

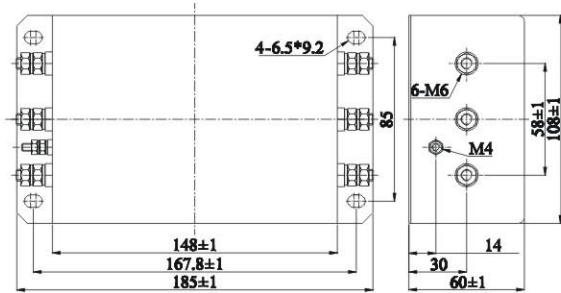


Fig3

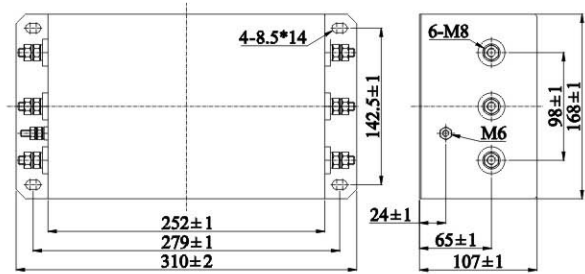


Fig4

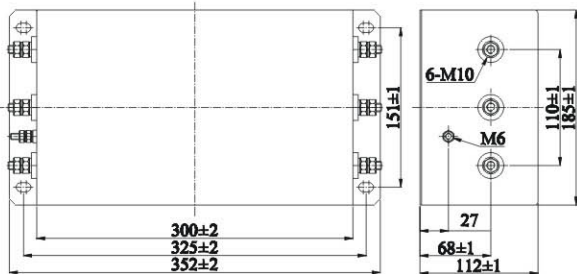
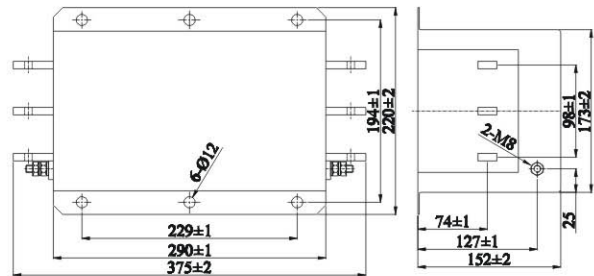
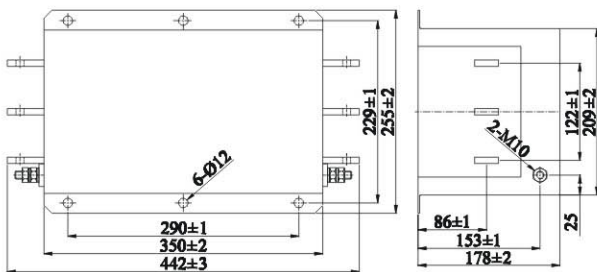


Fig5



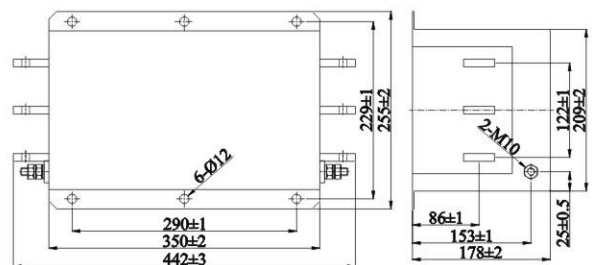
连接方式(connection): 8\*20=160MM<sup>2</sup> 铜排

Fig6



连接方式(connection): 8\*30=240MM<sup>2</sup> 铜排 (Bar)

Fig7



连接方式Connection: 10\*40=400mm<sup>2</sup> 铜排